

Columns, May 2012

Network Connection

Link of the Month

Helpdesk FYI

RSS Matters

ITC News

Training

Staff Activities

[Home](#) » [issues](#) » [2012-05](#) » [rss-matters](#)

RSS Matters

Research and Statistical Support University of North Texas

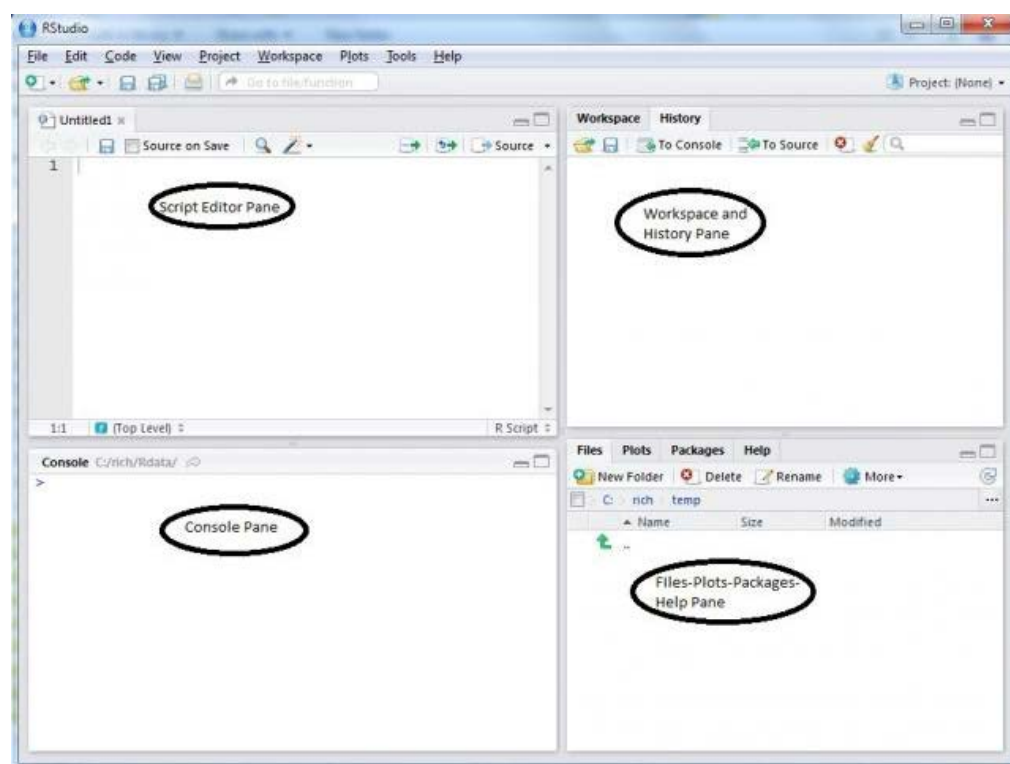
Using RStudio and RStudio Server with R

Link to the last RSS article here: [Simulation as an important method for learning and a necessary step of good research practice.](#) -- Ed.

By **Dr. Rich Herrington**, Research and Statistical Support Consultant

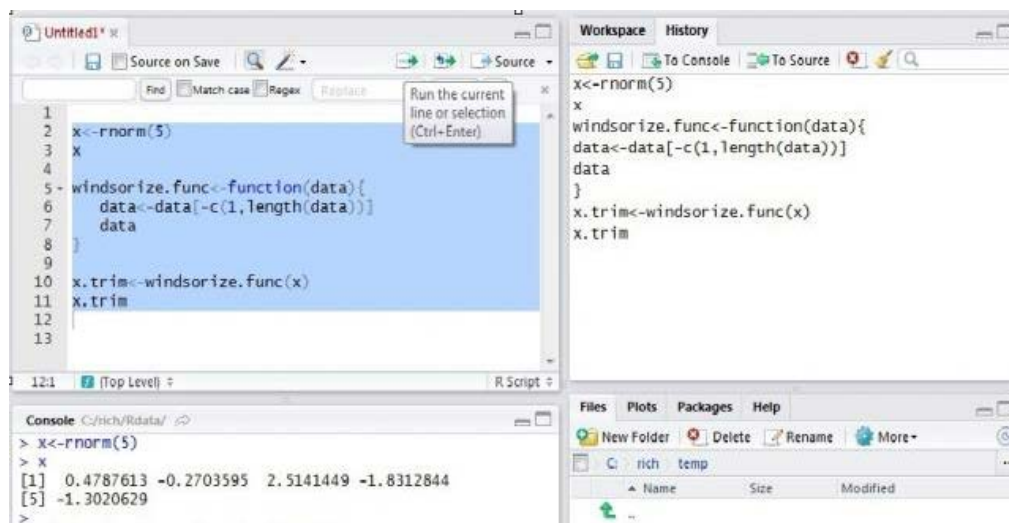
This month we look at an open-source [integrated development environment \(IDE\)](#) for R: RStudio and the accompanying RStudio Server - the URL for the project is located at <http://www.rstudio.org>.

The layout of RStudio is consistent across the stand-alone version and server version of the IDE:

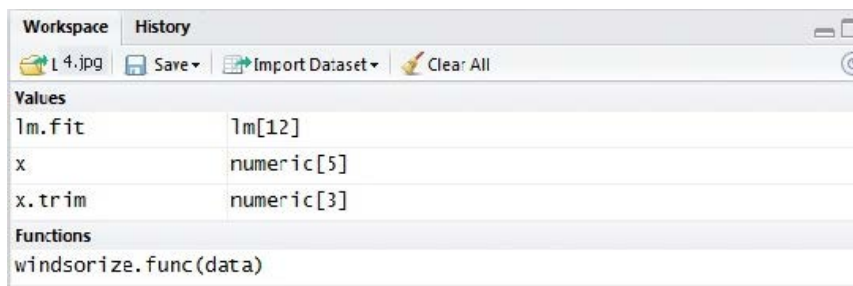


There are four regions of interest in RStudio: File Editor pane; Workspace-History pane; Console pane and the Files-

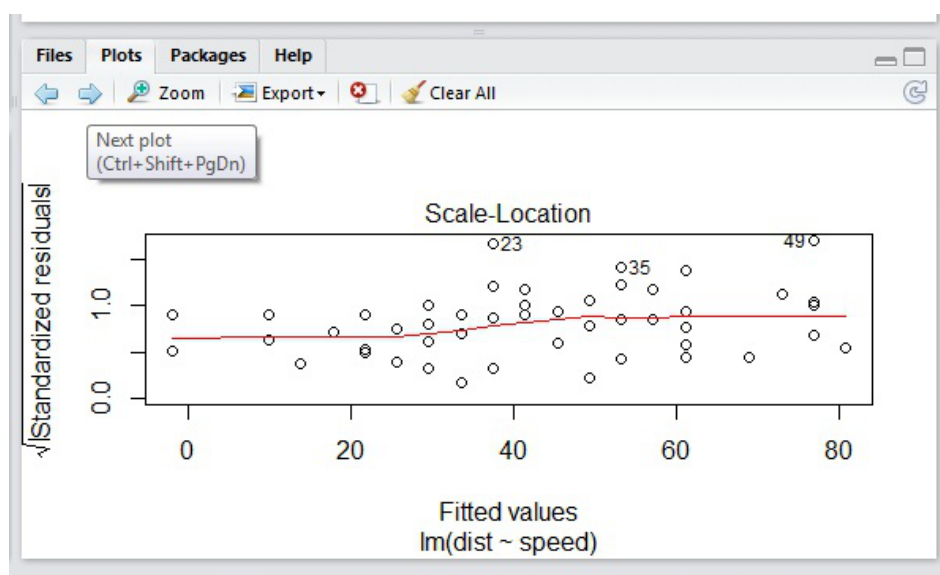
Plots-Packages-Help pane. The File Editor pane allows scripts to be entered and saved, and allows the whole script or highlighted portions of the script to be run with output displaying in the Console pane:



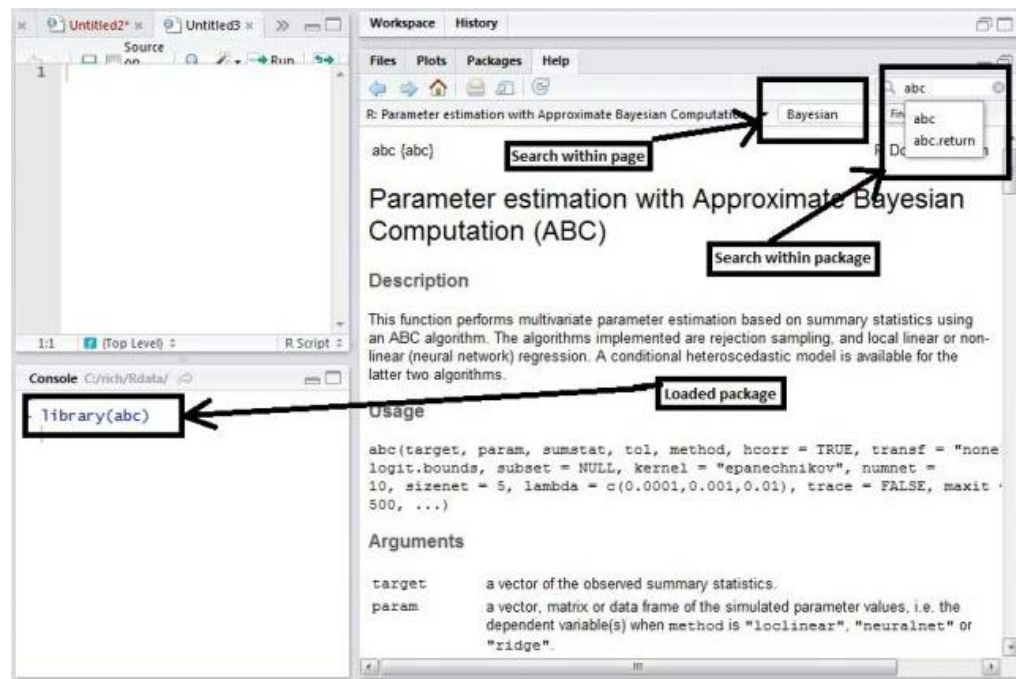
Additionally, the History pane displays past commands that have been run either as a script or in the Console pane. The Workspace pane keeps track of objects as they are created and gives descriptions of the objects (e.g. numeric, character, function, data.frame, etc):



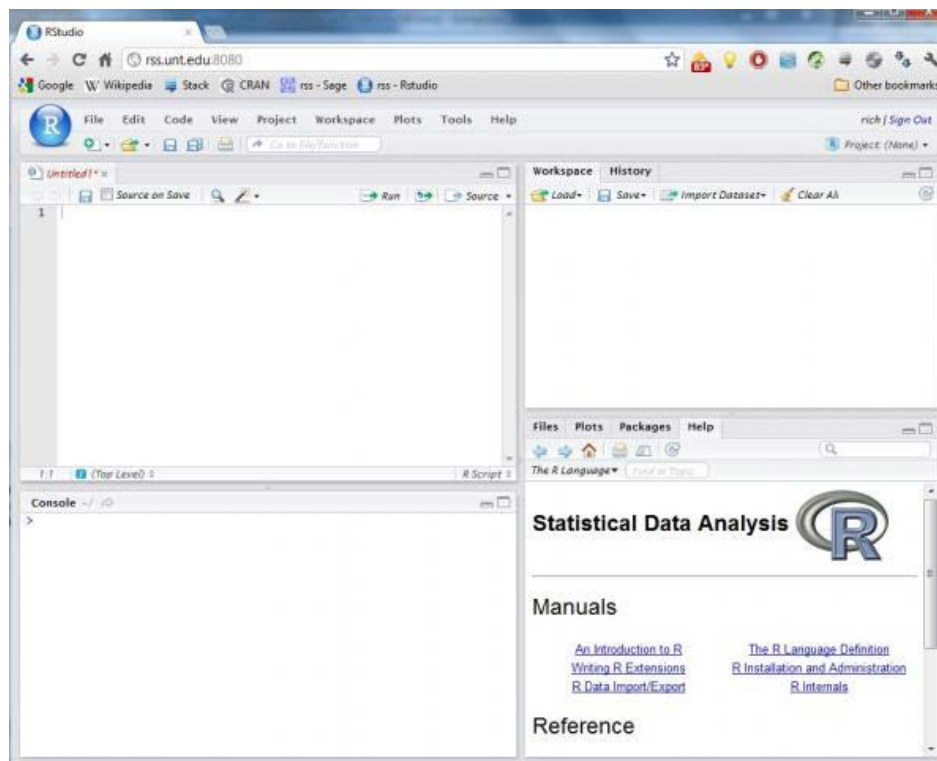
Plots are displayed and are accumulated in the Plot pane; previous plots can be viewed by using the "back" and "forward" arrows or by using the short-cut key combination `Ctrl+Shift+PgDn`:



RStudio has the R-help system built into the Help pane with global (within a loaded package) and local searches (within a help page) being available:



The RStudio server version has the same interface as the stand-alone version, but is accessible through a web-browser on a specified port (e.g. port 80, 8080 or some other web-related port). The server version of RStudio allows the state of the R session to remain suspended upon logout. Logging back enables the user to continue where he/she left off prior to logout:



RStudio run as a server, makes working with and sharing data and R scripts, across multiple platforms and multiple machines, very convenient. Directions for downloading and installing the RStudio Server version can be found at: http://www.rstudio.org/docs/server/getting_started.

References

- RStudio - <http://www.rstudio.org/>

- RStudio Documentation - <http://www.rstudio.org/docs/>



Contact Us:

University Information Technology

1155 Union Circle #310709
Denton, TX 76203 USA
Voice: 940-565-4068
Fax: 940-565-4060

Visit Us:

Sage Hall, Room 338
<http://it.unt.edu/benchmarks/>



Email us:

Have questions on content or technical issues? Please contact us.
unt.uit@unt.edu



UNT System:

- [UNT Home](#)
- [UNT System](#)
- [UNT Dallas](#)
- [UNT Health Science Center](#)

Site last updated on April 22, 2016

[Disclaimer](#) | [AA/EOE/ADA](#) | [Privacy Statement](#) | [Web Accessibility Policy](#) | [State of Texas Online](#) | [Emergency Preparedness](#)